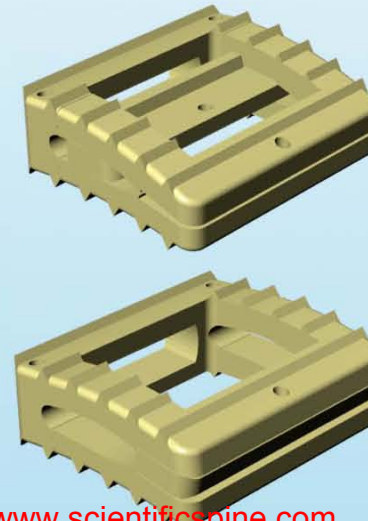


# SmArtCage-C

## Product Presentation

# SmArtCage-C

- Expansible cervical interbody fusion cage
- Expansion is induced via an expansion core
- Patented



Initial shape

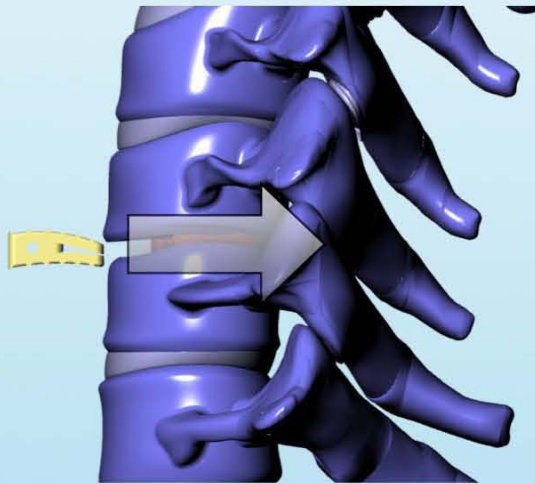
Final shape

# Features & advantages

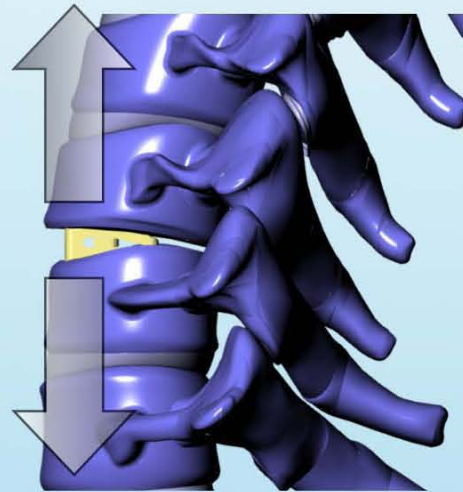
- Easy to insert,
- Strong bone anchoring due to expansion, prevents rejection,
- Neuro-foramen self-decompression during expansion,
- Manufactured in PEEK material:
  - Radio-lucent & MRI compatible,
  - Biocompatible,
  - Mechanical properties similar to bone,

# Cervical Product: SmArtCage-C

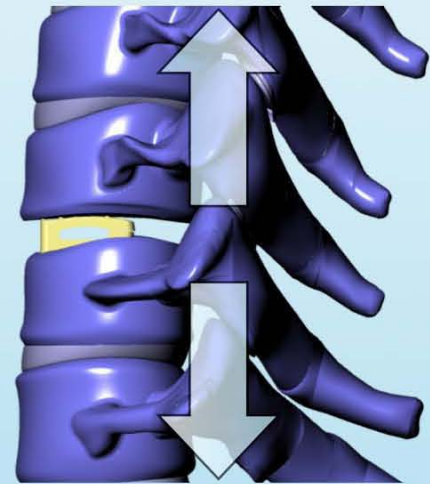
- 3 Surgical stages
- Can be filled with bone substitute after expansion



1. Insertion



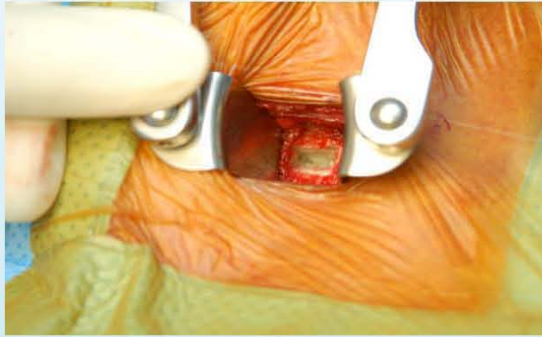
2. Position



3. Expansion



# Operating Procedure

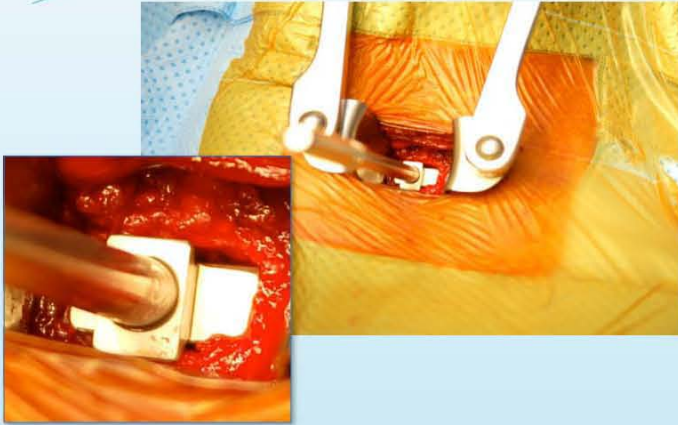


1. Site Preparation

2. Discectomy completed, probe is inserted to check foramen clearance

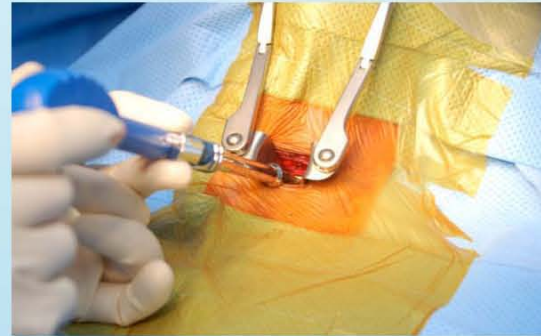


# Operating Procedure

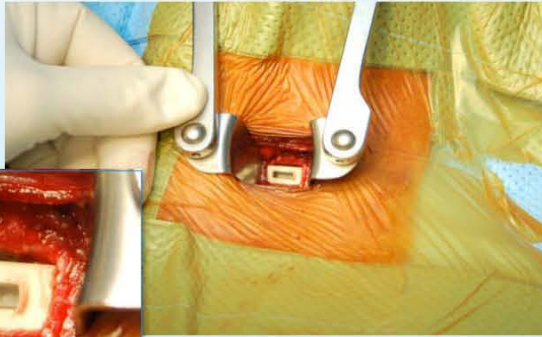


3. Implant sizing, using templates

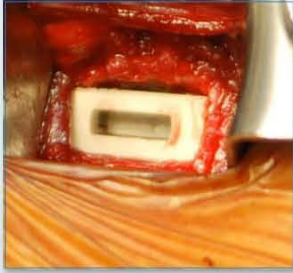
4. Insert implant & expand



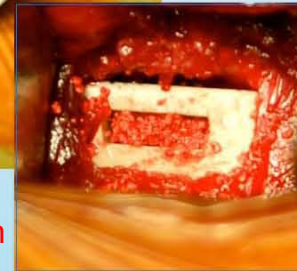
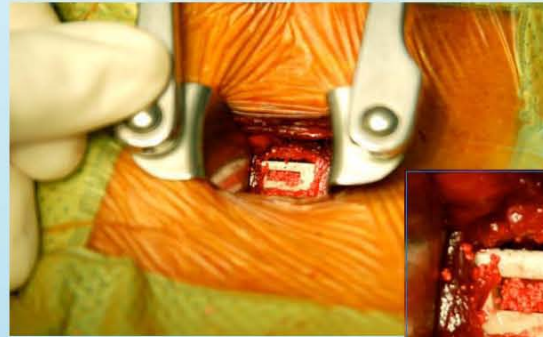
# Operating Procedure



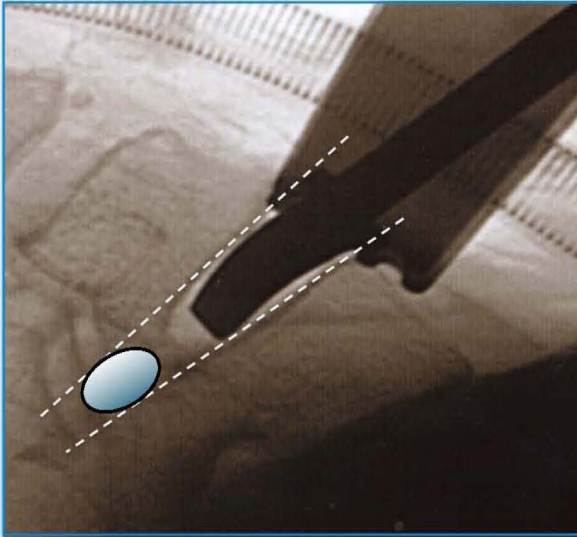
5. Remove holder



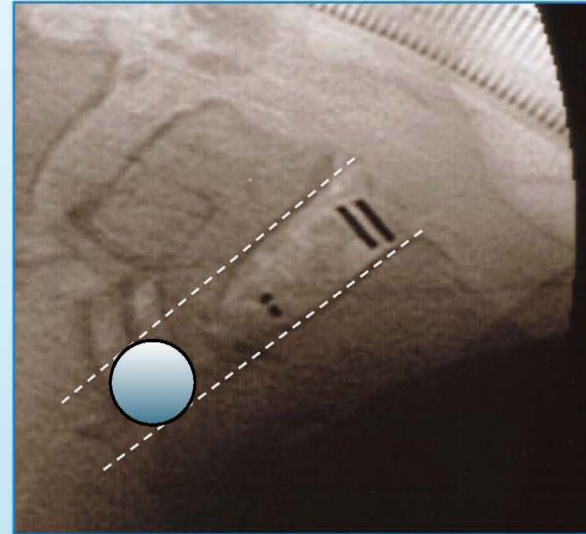
6. Fill with bone substitute



# X-Ray Control



Initial compression, as  
observed during sizing.



After expansion, full root  
decompression.



# Instrument Tools Set

Includes:

- 4 Templates (5, 6, 7 and 8 mm)
- Cage holder (3 components)

